

ITEM NO	AREA DESCRIPTION	UTILITY DESCRIPTION	ITEM NO	LOAD
184.	ROV & CTS	690V JUNCTIONBOX ROV WINCH +IX230V/I6A	874-JB-007	250A
		440V POWER SUPPLY TO CONTROL CONTAINER	875-EN-P300	400A
		440V JUNCTIONBOX	874-JB-018	CBI:40A CB3:60A
		230V JUNCTIONBOX / 3PH	JB-L35-32-01	32A
		SIGNAL UTILITY, FIBRE UTILITY	814-JB-001 425-JB-001	-
2.1	CUTTINGS LAY.AREA	440V JUNCTIONBOX	875-JB-P400-3	150A
		440V JUNCTIONBOX + IX230V/I6A	874-JB-017	150A
		440V JUNCTIONBOX 875-EN-P300-2	875-JB-300	100A
		440V JUNCTIONBOX +IX230V/I6A	874-JB-013	60A
		440V JUNCTIONBOX + IX230V/I6A (CB5)	875-JB-P400C	100A
		690V JUNCTIONBOX	326-JB-115	25A
		690V JUNCTIONBOX	326-JB-116	25A
		230V JUNCTIONBOX	874-JB-016A	16A
		230V JUNCTIONBOX	JB-L33-26-01	16A
		2.2	F&G JB	814-JB-020A
2.1	F&G & ESD JB	814-JB-582	-	
2.1	FO JB FOR 3RD PARTY	425-JB-705	-	
3.	COIL TUBING	690V POWER SUPPLY TO OROV MCC14/5.8	873-EN-M04	63A
		690V JUNCTIONBOX + IX230V/I6A	874-JB-015	16A
		SIGNAL UTILITY	814-JB-006	-
5,6&7..	WELLTEST,MWD&MUDLOG.	690V JUNCTIONBOX + IX230V/I6A	874-JB-014	200A
		230V JUNCTIONBOX	874-JB-016B	16A
5.1		440V JUNCTIONBOX POWER SUPPLY FROM 875-EN-P300 CB4/6 & 875-EN-P400 CB2/8	874-JB-400	CB6:30A CB4:40A CB2:40A CB8:60A
		440V JUNCTIONBOX	874-JB-019	60A
5.3		230V JUNCTIONBOX	JB-L44-10	16A
5.2		SIGNAL UTILITY	814-JB-005	-
5.1		FIBRE JB 3RD PARTY	425-JB-702	-
		440V JUNCTIONBOX, FEED FROM 874-JB-400	874-JB-400C	60A
		SIGNAL UTILITY, F&G, PAGA	814-JB-005C	-
		F&G & ESD JB	814-JB-611	-
6		F&G AND POWER	814-JB-610 JB-L44-20	16A
8.	RAISER DECK	SERVICE AIR, DRILL WATER, HP CLEANING.	-	-
		440V SOCKET OUTLET GRAVEL PACK	875-EN-P02	25A
		690V SOCKET OUTLET FROM 874-JB-012	JB-L44-10	63A
		230 JUNCTIONBOX	JB-L24-19-01	16A
		F&G JB - VENT HOUSE WALL	375-JB-010	-
		F&G JB - DEAD SHIP GEN ROOM	814-JB-211	-
		JB - 3RD PARTY RISER DECK STBD	814-JB-620	-
		JB - 3RD PARTY RISER DECK AFT	814-JB-621	-
		JB - 3RD PARTY RISER DECK PORT AFT	814-JB-622	-
		230VAC SOCKET, ONLY FOR 3RD PART ESD 2 DISCONNECTION	RP-L14-34-01	16A
230VAC SOCKET, ONLY FOR 3RD PART ESD 2 DISCONNECTION	RP-L14-34-02	16A		
230VAC SOCKET, ONLY FOR 3RD PART ESD 2 DISCONNECTION	RP-L14-36-01	16A		
230VAC SOCKET, ONLY FOR 3RD PART ESD 2 DISCONNECTION	RP-L14-36-02	16A		
8.8		FO JB 3rd PARTY GRAVEL PACK	425-JB-704	-
9.	CEMENT UNIT	SERVICE AIR, DRILL WATER, HP CLEANING.	-	-

Z4
Z4
Z4
Z4

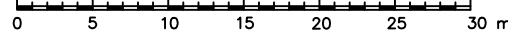
SYMBOL	UTILITY DESCRIPTION
P	690V/440V/230V UTILITY SUPPLY
S	SIGNAL UTILITY
F	FIBER UTILITY
S	SERVICE AIR
C	CONTROL AIR
D	DRILL WATER
W	SEA WATER
H	HP CLEANER
F	FUEL

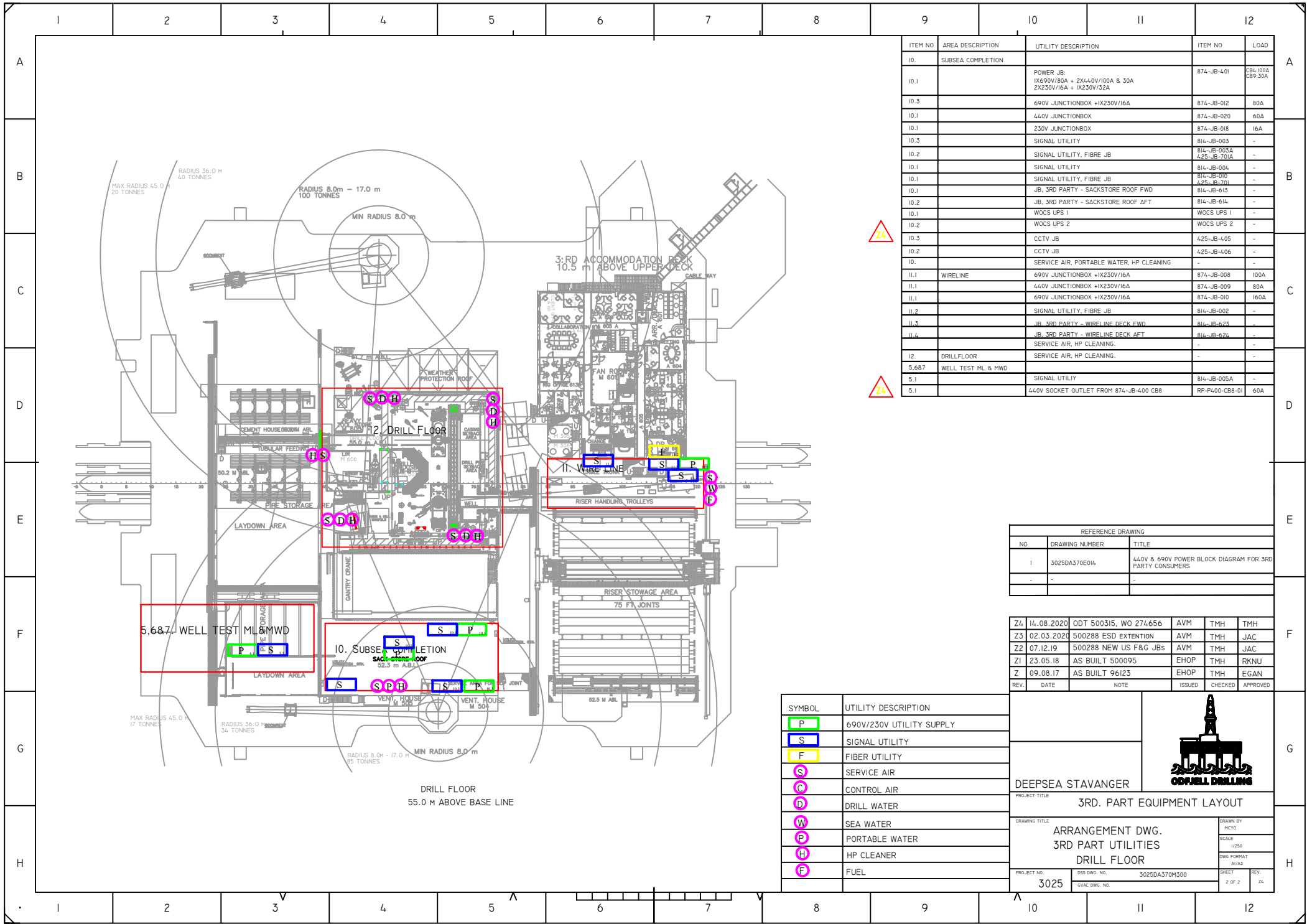
REV.	DATE	NOTE	ISSUED	CHECKED	APPROVED
Z4	14.08.2020	ODT 500315, WO 274656	AVM	TMH	TMH
Z3	02.03.2020	500288 ESD EXTENSION	AVM	TMH	JAC
Z2	07.12.2019	500288 NEW F&G JBS	AVM	TMH	JAC
Z	23.05.18	AS BUILT 500095	EHOP	TMH	RKNU
Z	09.08.17	AS BUILT 96123	EHOP	TMH	EGAN



PROJECT TITLE		3RD. PART EQUIPMENT LAYOUT		
DRAWING TITLE		ARRANGEMENT DWG. 3RD PART UTILITIES UPPER DECK		
PROJECT NO.	DSS DWG. NO.	3025DA370M300	SHEET	REV.
3025	GVAC DWG. NO.		1 OF 2	Z4

REFERENCE DRAWING		
NO.	DRAWING NO.	TITLE
I	3025DA370E014	440V & 690V POWER BLOCK DIAGRAM FOR 3RD PARTY CONSUMERS





ITEM NO.	AREA DESCRIPTION	UTILITY DESCRIPTION	ITEM NO.	LOAD
10.	SUBSEA COMPLETION			
10.1		POWER JB: 1X690V/80A + 2X440V/100A & 30A 2X230V/16A + 1X230V/32A	874-JB-401	CB6,100A CB9,30A
10.3		690V JUNCTIONBOX +1X230V/16A	874-JB-012	80A
10.1		440V JUNCTIONBOX	874-JB-020	60A
10.1		230V JUNCTIONBOX	874-JB-018	16A
10.3		SIGNAL UTILITY	814-JB-003	-
10.2		SIGNAL UTILITY, FIBRE JB	814-JB-003A 425-JB-701A	-
10.1		SIGNAL UTILITY	814-JB-004	-
10.1		SIGNAL UTILITY, FIBRE JB	814-JB-010 425-JB-701	-
10.1		JB, 3RD PARTY - SACKSTORE ROOF FWD	814-JB-613	-
10.2		JB, 3RD PARTY - SACKSTORE ROOF AFT	814-JB-614	-
10.1		WOC'S UPS 1	WOC'S UPS 1	-
10.2		WOC'S UPS 2	WOC'S UPS 2	-
10.3		CCTV JB	425-JB-405	-
10.2		CCTV JB	425-JB-406	-
10.		SERVICE AIR, PORTABLE WATER, HP CLEANING	-	-
11.1	WIRELINE	690V JUNCTIONBOX +1X230V/16A	874-JB-008	100A
11.1		440V JUNCTIONBOX +1X230V/16A	874-JB-009	80A
11.1		690V JUNCTIONBOX +1X230V/16A	874-JB-010	160A
11.2		SIGNAL UTILITY, FIBRE JB	814-JB-002	-
11.3		JB, 3RD PARTY - WIRELINE DECK FWD	814-JB-621	-
11.4		JB, 3RD PARTY - WIRELINE DECK AFT	814-JB-624	-
12.	DRILLFLOOR	SERVICE AIR, HP CLEANING.	-	-
5,6&7	WELL TEST ML & MWD			
5.6,7		SIGNAL UTILITY	814-JB-005A	-
5.1		440V SOCKET OUTLET FROM 874-JB-400 CB8	RP-PL00-CB8-01	60A



REFERENCE DRAWING		
NO	DRAWING NUMBER	TITLE
1	3025DA370E014	440V & 690V POWER BLOCK DIAGRAM FOR 3RD PARTY CONSUMERS
-	-	-

REV.	DATE	NOTE	ISSUED	CHECKED	APPROVED
Z4	14.08.2020	ODT 500315, WO 274656	AVM	TMH	TMH
Z3	02.03.2020	500288 ESD EXTENTION	AVM	TMH	JAC
Z2	07.12.19	500288 NEW US F&G JBS	AVM	TMH	JAC
Z1	23.05.18	AS BUILT 500095	EHOP	TMH	RKNU
Z	09.08.17	AS BUILT 96123	EHOP	TMH	EGAN

SYMBOL	UTILITY DESCRIPTION
P	690V/230V UTILITY SUPPLY
S	SIGNAL UTILITY
F	FIBER UTILITY
S	SERVICE AIR
C	CONTROL AIR
D	DRILL WATER
W	SEA WATER
P	PORTABLE WATER
H	HP CLEANER
F	FUEL

ODFJELL DRILLING

DEEPPSEA STAVANGER

PROJECT TITLE

3RD. PART EQUIPMENT LAYOUT

DRAWING TITLE

**ARRANGEMENT DWG.
3RD PART UTILITIES
DRILL FLOOR**

DRAWN BY: MICRO

SCALE: 1:250

DWG FORMAT: A1/A3

PROJECT NO: 3025

DSS DWG. NO: 3025DA370M300

SVAC DWG. NO:

SHEET: 2 OF 2

REV: Z4

